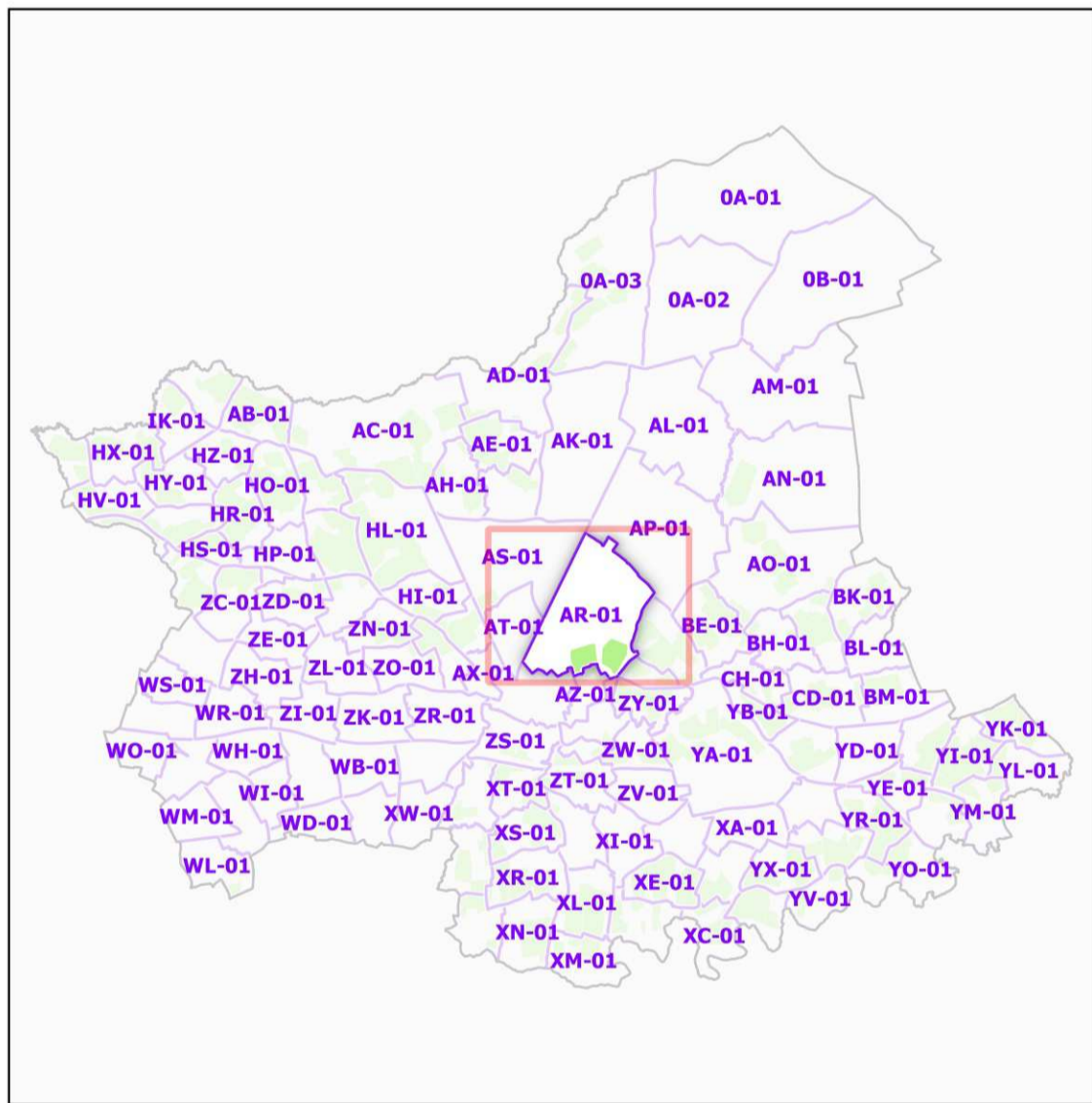
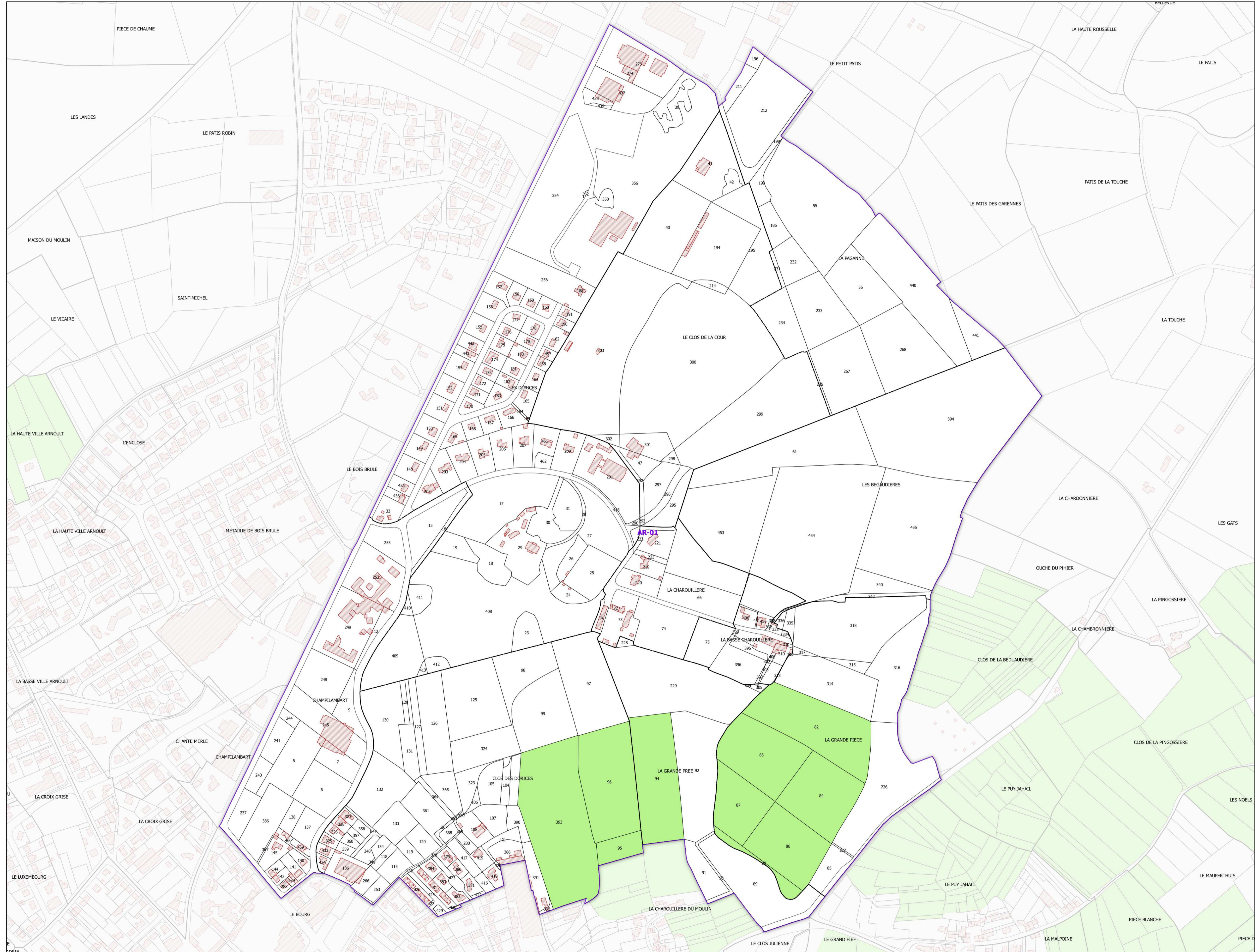
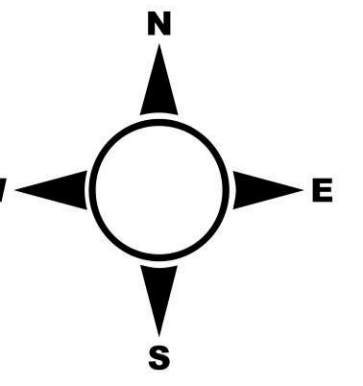




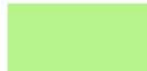




COMMUNE DE VALLET - 44212 (section : AR)



Légende

-  Lieux-dits
-  Sections cadastrales
-  Bâti
-  Parcelles
-  AOC GROS PLANT DU PAYS NANTAIS

DELIMITATION DEFINITIVE APPROUVEE PAR DECISION DU COMITE NATIONAL DES APPELLATIONS D'ORIGINE RELATIVES AUX VINS ET AUX BOISSONS ALCOOLISEES, ET DES BOISSONS SPIRITUEUSES DE L'INAO EN SA SEANCE DU 03/05/2017

